



SAVE SPACE WITH THE LISTA LIFT

OPTIMISE SPACE, TIME AND COSTS WITH THE AUTOMATIC STORAGE LIFT SYSTEMS FROM LISTA



EFFICIENCY UP, COSTS DOWN

Less is more: this also applies to modern storage systems. Fast access and space-saving features offer your company clear competitive advantages. Automatic storage lift systems from LISTA help to make processes even more efficient. They optimise space utilisation, save time, simplify stock control and are ergonomic.

Variable in height, width and load capacity, LISTA lift systems can be flexibly adapted, controlled and, if required, interlinked to suit individual customer requirements. This means you benefit from standard LISTA quality, competence and service of a leading system provider. And choose a solution that can be trusted.





+ Save up to 90% space

- optimised use of space by vertical storage
- up to 16,1m high, also over several storeys
- supports from 1500–4100 mm wide
- load-bearing capacity of 250–750 kg per support
- heavy-duty versions with 990 kg load-bearing capacity per support
- up to 90 000 kg total load capacity

+ Significant time saving

- material delivered directly to the operator
- optimised picking times
- quick access
- short transport distances, optimised processes

+ Reduced error frequency, improved stock control

- automatic system
- easy to operate

+ More safety and ergonomics

- controlled access to individual trays
- reliable protection of inventory items
- minimum physical strain, employees can be more productive

+ Modular design, efficient management

- variable system in height, width and load capacity
- individual configuration options and add-ons
- software-supported control with different integration levels
- compatible with all conventional ERP systems

+ Top service

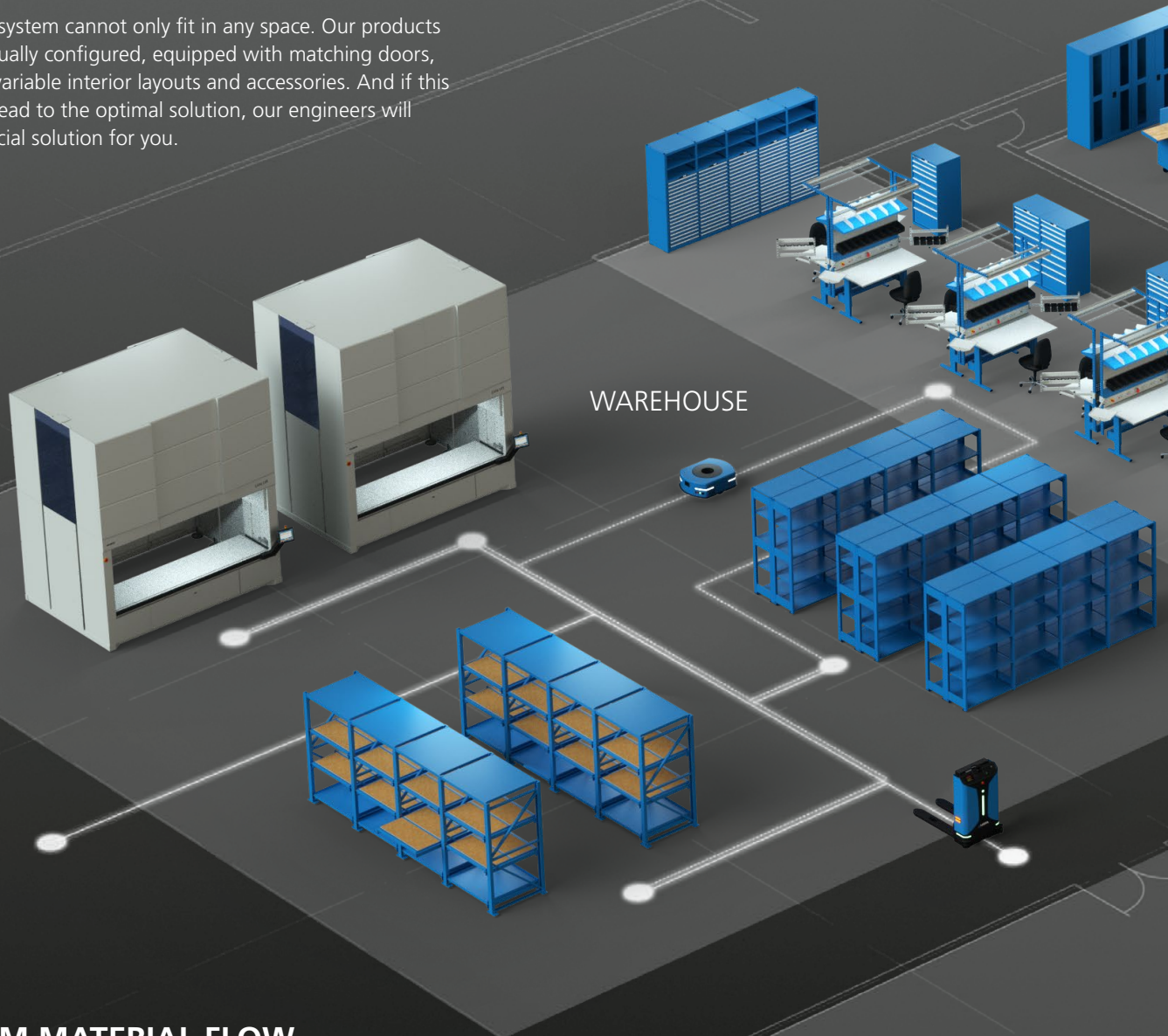
- individual planning and adaptation
- training and maintenance concepts
- guaranteed 24-hour response
- 4-hour intervention time on request

SYSTEMATIC WORK

The system-based approach is a LISTA trademark. To help you set up your business in the best way possible, we offer you a comprehensive range for all functional areas. Combine individual modules freely as required, from the warehouse, workshop, production and assembly to the office.

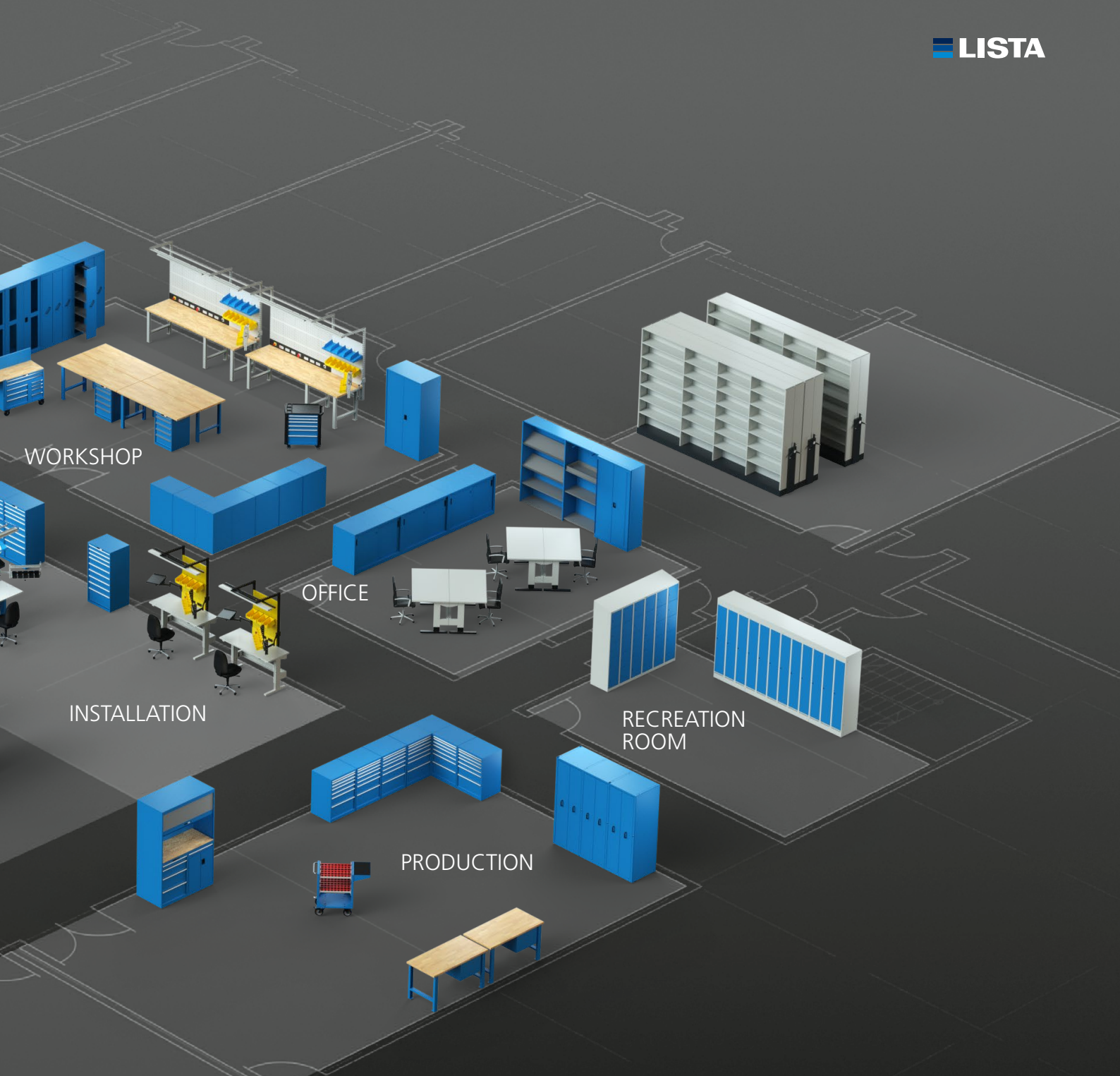
Yet the LISTA system cannot only fit in any space. Our products can be individually configured, equipped with matching doors, countertops, variable interior layouts and accessories. And if this still does not lead to the optimal solution, our engineers will develop a special solution for you.

In this way, the LISTA system combines a consistent look and feel with individual functionality, thereby creating the basis for efficient processes in your company. In other words, LISTA allows you to work faster, more productively or simply better.



OPTIMUM MATERIAL FLOW

In addition to ergonomic workplace design and storage, the fast and easy transport of goods and material is a decisive criterion for efficiency and productivity in a company. LISTA solutions ensure a smooth material flow and thus make a valuable contribution to further optimising your intralogistics.



+ Intelligent system solution

- central control from the customer's ERP/WMS
- integration of various lifts, vehicles and components
- optimum synergy with LISTA storage and workspace equipment

+ High flexibility

- wide range of life and vehicle types for a wide range of transport goods and applications
- individual configuration and adjustment options

+ Maximum efficiency

- high payloads
- compact dimensions
- exact navigation
- optimum cost control

+ Outstanding safety features

- effective collision protection by sensors, emergency stop, etc.
- automatic charging function

GROWS WITH ITS TASKS

THE LISTA LIFT AT A GLANCE



25mm slots with automatic inventory item recognition

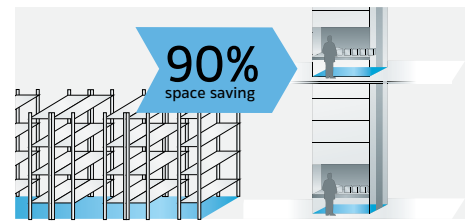
With special support brackets in 25 mm slots, the LISTA Lift can store the most diverse items extremely compactly and economically. What's more, it does this automatically: an electronic measuring system automatically measures the height of the inventory items and optimises the distances between stored items.



LISTA Lift partition materials

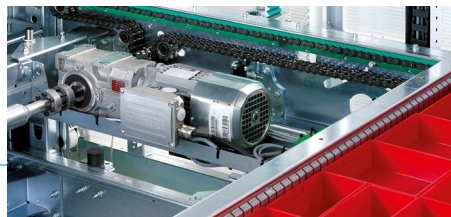
With the precisely fitting and versatile LISTA partition material, almost any inventory item can be stored in a tidy and space-saving manner.





Vertical lift module

The LISTA Lift can be flexibly adapted to ceiling heights of up to 14m, including over several storeys and with several access hatches. The vertical storage concept saves up to 90% space and significantly reduces picking times, as the material is delivered only at one point.



Efficient, smooth-running drive

Powerful and efficient motors guarantee low energy consumption across the entire range of LISTA Lift models. They are driven by quiet-running drive belts. The system offers highly efficient energy recovery on the down-stroke of the trays.



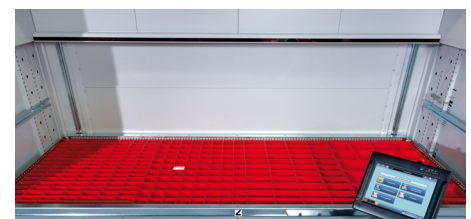
Variable trays

Different types of trays offer space for all types of inventory items, from small parts to heavy components: The system has widths of 1500 to 4100 mm and 250, 500, 750 or 990 kg load-bearing capacity. Two heights and depths are available. A detailed overview can be found on page 9.



Traversing operating console

The integrated traversing console optimises the ergonomics and functionality of the LISTA Lift, even with a heavy picking schedule.



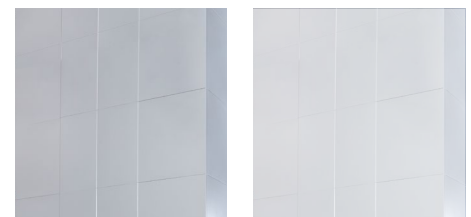
Energy-saving LED lighting

The LED lighting in the LISTA Lift offers the benefit of a long useful life and low power consumption.



Easy maintenance

An easily accessible control drawer and ladders inside the installation make maintenance of the LISTA Lift simple. Maintenance access is possible on both sides, but it must be ensured from at least one side.



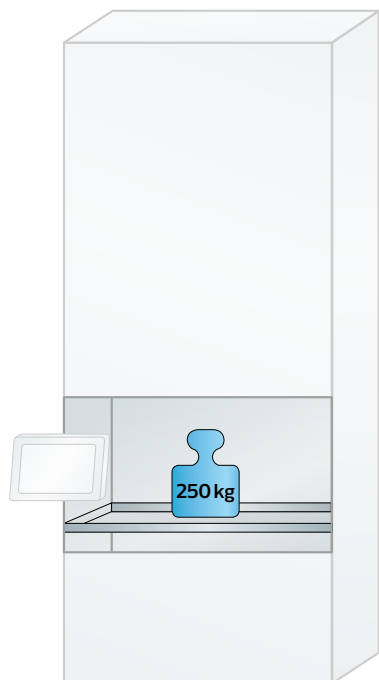
Choice of colour

LISTA Lifts are available in two standard colours: Light grey (RAL7035) and Pantone white.

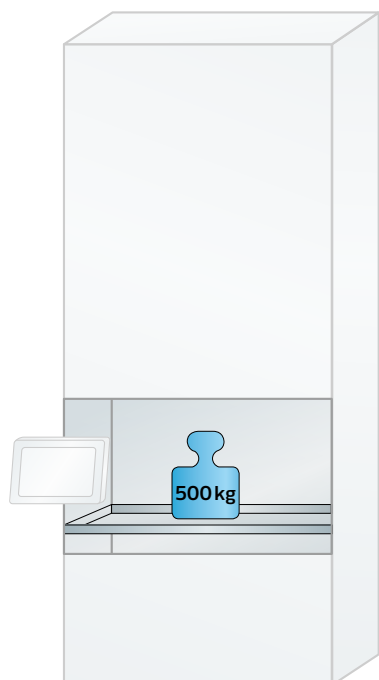
MODEL OVERVIEW

LISTA LIFT SYSTEMS AT A GLANCE

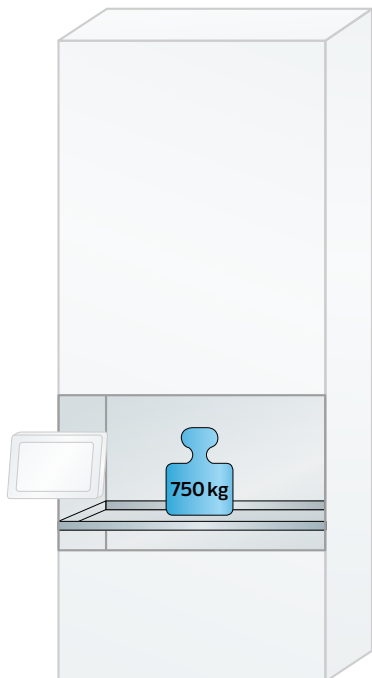
To find out more about the diverse applications of LISTA storage lift systems, please contact us. We look forward to advising you personally.



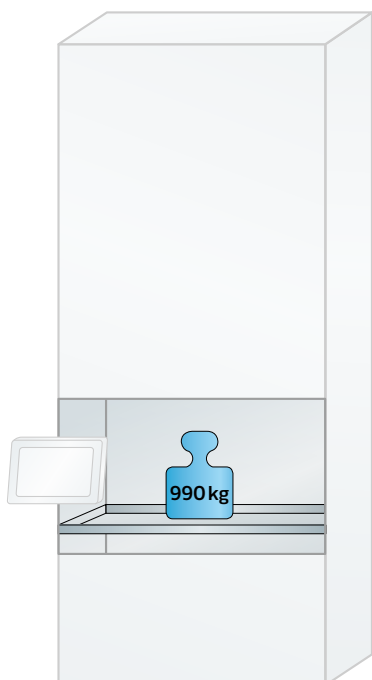
Model	Tray width (mm)	Tray depth (mm)	Tray height (mm)	Exterior dimensions of internal access hatch (W × D mm)	Exterior dimensions of external access hatch (W × D mm)
1500S	1500	654	45/70/120	1917 × 2463	1917 × 3199
1500L	1500	857	45/70/120	1917 × 3073	1917 × 4012
1900S	1900	654	45/70/120	2317 × 2463	2317 × 3199
1900L	1900	857	45/70/120	2317 × 3073	2317 × 4012
2500S	2500	654	45/70/120	2317 × 2463	2917 × 3199
2500L	2500	857	45/70/120	2917 × 3073	2917 × 4012
3100S	3100	654	45/70/120	3517 × 2463	3517 × 3199
3100L	3100	857	45/70/120	3517 × 3073	3517 × 4012
4100S	4100	654	70/120	4517 × 2463	4517 × 3199
4100L	4100	857	70/120	4517 × 3073	4517 × 4012



Model	Tray width (mm)	Tray depth (mm)	Tray height (mm)	Exterior dimensions of internal access hatch (W × D mm)	Exterior dimensions of external access hatch (W × D mm)
1500S	1500	654	70/120	1917 × 2463	1917 × 3199
1500L	1500	857	70/120	1917 × 3073	1917 × 4012
1900S	1900	654	70/120	2317 × 2463	2317 × 3199
1900L	1900	857	70/120	2317 × 3073	2317 × 4012
2500S	2500	654	70/120	2917 × 2463	2917 × 3199
2500L	2500	857	70/120	2917 × 3073	2917 × 4012
3100S	3100	654	70/120	3517 × 2463	3517 × 3199
3100L	3100	857	70/120	3517 × 3073	3517 × 4012
4100S	4100	654	120	4517 × 2463	4517 × 3199
4100L	4100	857	120	4517 × 3073	4517 × 4012



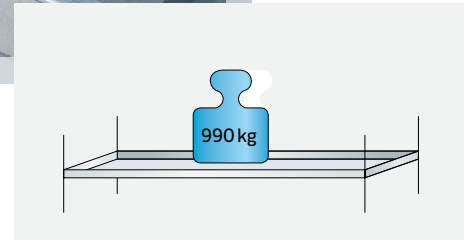
Model	Tray width (mm)	Tray depth (mm)	Tray height (mm)	Exterior dimensions of internal access hatch (W x D mm)	Exterior dimensions of external access hatch (W x D mm)
1500S	1500	654	70/120	1917 x 2463	1917 x 3199
1500L	1500	857	70/120	1917 x 3073	1917 x 4012
1900S	1900	654	70/120	2317 x 2463	2317 x 3199
1900L	1900	857	70/120	2317 x 3073	2317 x 4012
2500S	2500	654	70/120	2917 x 2463	2917 x 3199
2500L	2500	857	70/120	2917 x 3073	2917 x 4012
3100S	3100	654	70/120	3517 x 2463	3517 x 3199
3100L	3100	857	120	3517 x 3073	3517 x 4012
4100S	4100	654	120	4517 x 2463	4517 x 3199
4100L	4100	857	120	4517 x 3073	4517 x 4012



Model	Tray width (mm)	Tray depth (mm)	Tray height (mm)	Exterior dimensions of internal access hatch (W x D mm)	Exterior dimensions of external access hatch (W x D mm)
1500S	1460	654	120	1917 x 2463	1917 x 3199
1500L	1460	857	120	1917 x 3073	1917 x 4012
1900S	1860	654	120	2317 x 2463	2317 x 3199
1900L	1860	857	120	2317 x 3073	2317 x 4012
2500S	2460	654	120	2917 x 2463	2917 x 3199
2500L	2460	857	120	2917 x 3073	2917 x 4012
3100S	3060	654	120	3517 x 2463	3517 x 3199
3100L	3060	857	120	3517 x 3073	3517 x 4012
4100S	4060	654	145	4517 x 2463	4517 x 3199
4100L	4060	857	145	4517 x 3073	4517 x 4012

Find out more about our LISTA Lift S.

FOR GREATER EFFICIENCY OPTIONS AND ADD-ONS



Second access hatch

With the option of a second access hatch level, the LISTA Lift offers a very fast picking rate, which reduces waiting times considerably. While the operator processes one tray, the next tray to be processed is already being made ready in the second hatch position.

External access hatch

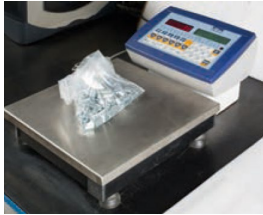
The external access hatch creates an ergonomic work area which optimises picking times and can be combined with picking tools, crane systems and lifting equipment. Safety is ensured by light barriers complying with international regulations.

Heavy-duty lift

The LISTA heavy-duty lift is the only storage lift system to offer a load capacity of up to 990 kg per tray at widths above 4000 mm. Like all LISTA Lift models, it can support a total weight of up to 90t and is available with the same equipment features. This means: storage without compromise and even more capacity. A model overview can be found on page 9.

Optional add-ons

The LISTA Lift can be individually extended to simplify work processes.



Item weighing scale



Label printer



RFID reader



Barcode reader



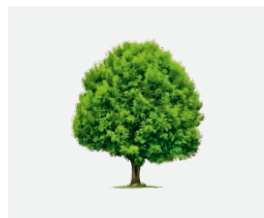
Laser pointer



Weight distribution plates



Telescopic pull-out



LISTA Green
(energy recovery)



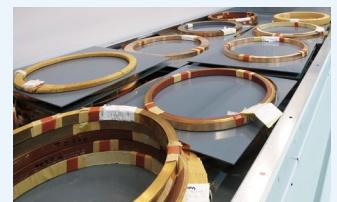
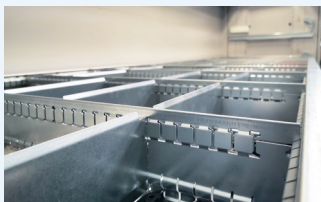
LED item indicator (internal/
external), alternatively alpha-
numeric item indicator



Robot cell

**ORDER WITH SYSTEM
WITH LISTA PARTITION MATERIAL**

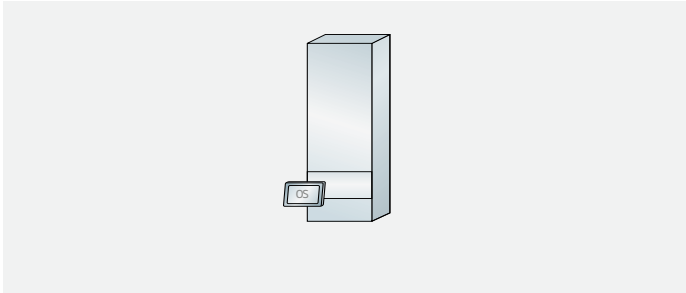
LISTA creates systematic order for every requirement. Whether standard metal dividers or customer-specific requirements, our partition material offers flexible solutions for practically any stored goods.



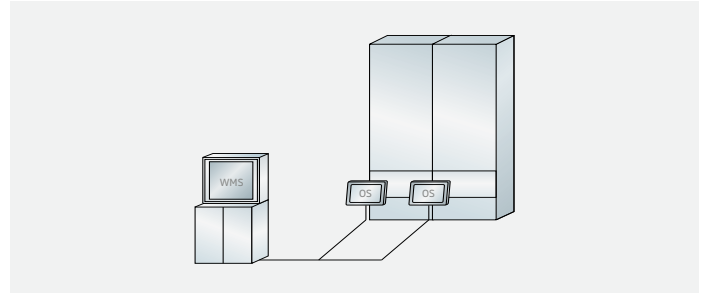
LISTA LIFT MANAGEMENT WAREHOUSE MANAGEMENT SYSTEM

A range of comprehensive solutions are available for the operation and management of the LISTA Lift. The LISTA Lift management system is scalable and can be adapted to suit individual requirements in three different integration levels. It includes simple

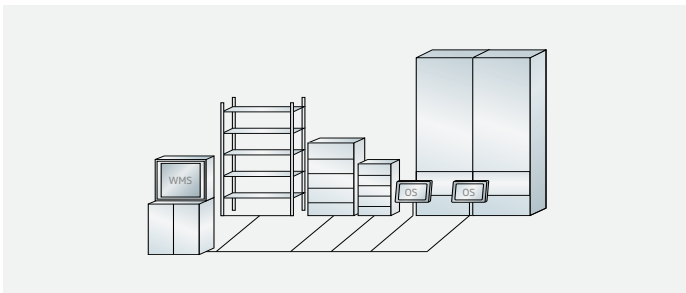
machine control, extended warehouse management with LISTA WMS software through to complete integration of the LISTA Lift by connection to all standard ERP systems.



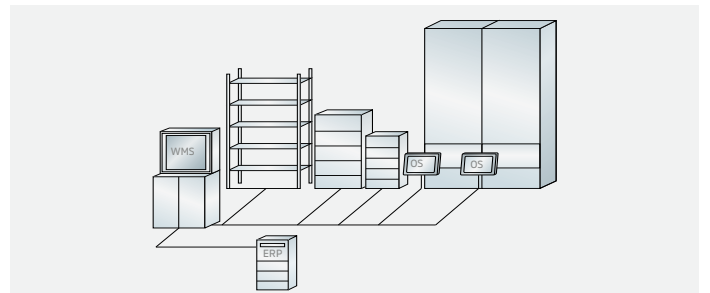
Level 1 (OS)
Simple support management
• included as standard



Level 2 (WMS Basic)
Additional warehouse management software
• for easy user/warehouse management



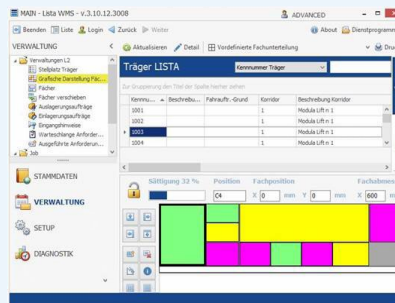
Level 2 (WMS Advanced)
Additional warehouse management software
• for advanced user/warehouse management



Level 3 (ERP)
Additional integration into the customer's ERP system
• via appropriate interfaces

LISTA WMS SOFTWARE INTUITIVE AND INDIVIDUAL

LISTA WMS software is a modular, database-supported solution that simplifies warehouse management and speeds up work processes. It can be installed on several computers and integrated into the respective IT environment via diverse interfaces, so that it can be adapted to suit individual customer requirements. The software is easy to use and therefore quick and intuitive.



THE LISTA SERVICE MODEL

LISTA not only allows you to opt for first-class products: our service model also offers you comprehensive services at various service levels. True to the motto "one face to the customer", LISTA Services combines maintenance, spare parts, training, IT support and more.

Our portfolio ranges from standard services to complete service packages tailored to your individual needs. Our goal is to guarantee maximum performance and operational safety.

LISTA Lift Services

	Silver	Gold*	Platinum*
Check safety functions in accordance with service log	■	■	■
3h free of charge with every incident	■	■	■
Preventive measures incl. cleaning the sample	■	■	■
Service report	■	■	■
Discount on wearing parts			■
Hotline during office hours	■	■	■
Hotline outside office hours		■	■
On-site guarantee in 24 h – during office hours	■		
On-site guarantee in 8 h – during office hours		■	
On-site guarantee in 8 h, 6 h or 4 h – 24/7/365			■
Software update	■	■	■

* conditional spare parts package

General LISTA services at a glance

We can find the right solution for you together. LISTA Service includes requirements analysis and individual planning, installation, training, maintenance and adaptation, as well as support concepts such as a guaranteed 24-hour response. Experienced and highly qualified staff are available to provide support in all areas. **Please contact us.**



Advice, planning and visualisation



Individual engineering



Installation



After sales



Spare parts



Customer service



Repairs



Training



Yearly maintenance

IN OPERATION WORLDWIDE THE LISTA LIFT IN PRACTICE

Around 2,000 LISTA storage lift systems are currently in use: worldwide, in diverse sectors and variants. And always successfully.







www.lista.com